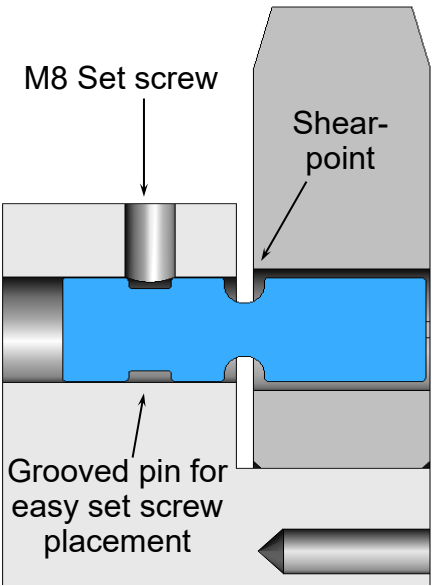




Features:

- ✓ Heavy Duty 304 Stainless steel Hub eliminates Hobbing and keyway breakages experienced with plastic Hubs.
- ✓ Solid bolted on endplate holds the sprocket in place. This design is easier to maintain than snap rings.
- ✓ Aluminum shear pin provides reliable torque overload protection
- ✓ 3 different shear pin sizes available
- ✓ 100% tested, Made in the USA.

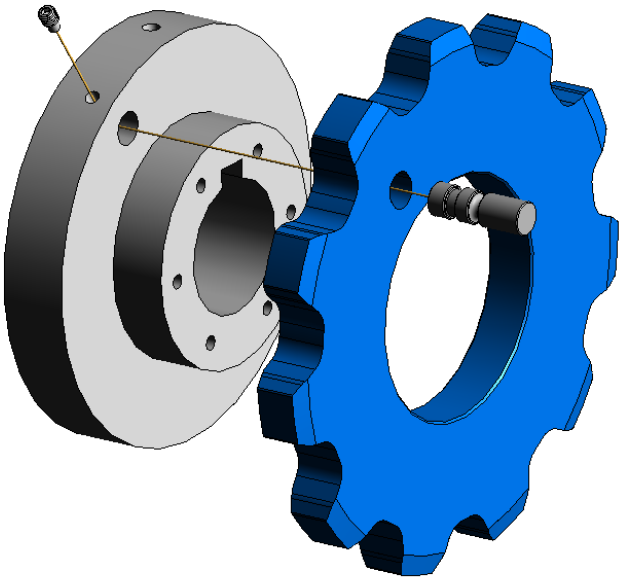
SHEAR PIN/HUB SPECIFICATIONS



<u>SHEAR PIN OPTIONS</u>	<u>CHAIN FORCE*</u>
GREEN	1788 LBF
SILVER (Standard)	2334 LBF
RED	2956 LBF

*When used with 78-11T Sprocket

Hub Material	304 Stainless Steel
Sprocket Material	Carbon Fiber Reinforced Nylon 12
Bore Sizes	1" (25.4mm) - 2-15/16" (58.74mm)
Length Thru Bore	2.56" (65mm)
Pitch Diameter	9.26" (235mm)



BRANDT MANUFACTURING

4974 Bird Drive
Stockbridge, MI 49285

Phone: (517) 851-7000
sales@brandt-mfg.com

www.brandt-mfg.com